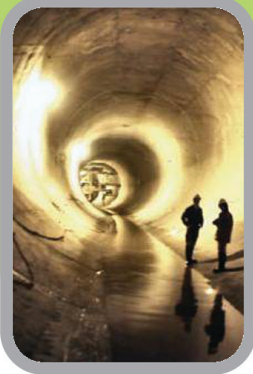


# WALLER CREEK TUNNEL PROJECT



Waller Creek flooding



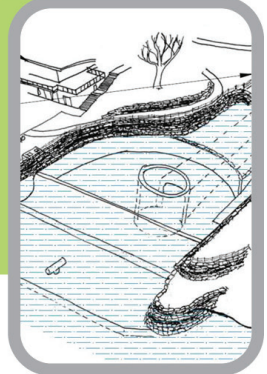
Tunnel example



Tunnel shaft from below



Tunnel shaft from above



Tunnel outlet

WINTER 2012

COMMUNITY UPDATE

## MAJORITY OF TUNNEL PROJECTS UNDER CONSTRUCTION

This fall, the Waller Creek Tunnel Project reached a milestone when three of the five main projects entered construction phase. The outlet will be advertised and awarded in early 2012. The entire project is scheduled for completion in spring of 2015.

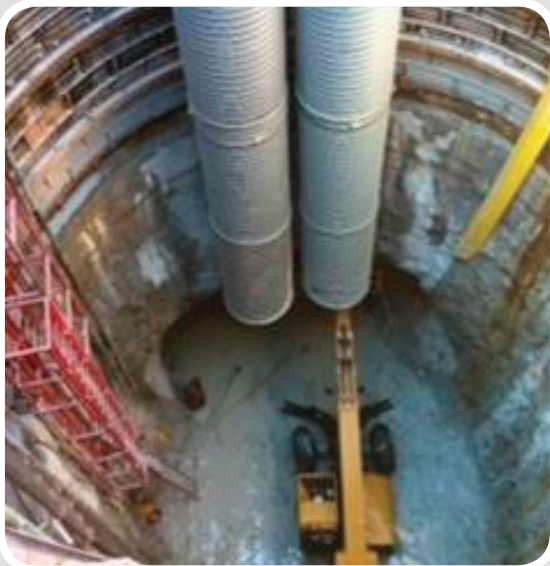
## PARKS AND RECREATION BOATHOUSE

The Waller Creek Tunnel Project is building a new Parks and Recreation boathouse as mitigation for using parkland to build the tunnel outlet lagoon. The building will feature a deck accessible to the public, public restrooms, park staff office space, boat storage, a concession area, activity rooms, and locker rooms.

The contractor has completed the building envelop and is installing electrical and plumbing



in preparation for finishing the drywall. Final details are being made on fixtures, wall colors, and floor coverings.



## THE MAIN TUNNEL SEGMENT

This project will construct the major portion of the tunnel from Waterloo Park to the outlet lagoon on the shores of Lady Bird Lake. Recently, the contractor completed a 70-ft. deep vertical entrance shaft between 4th and 5th Streets. The entrance shaft will enable work crews to position specialized drilling machines and begin lateral

tunneling in two directions, northward to Waterloo Park and southward to Lady Bird Lake. It will take dozens of workers nearly three years to dig the mile-long, 20-26 ft diameter segment. As rock is excavated, it will be loaded into dump trucks for disposal at a local quarry. The final step will be to line the tunnel with concrete.

# WALLER CREEK

## THE INLET AT WATERLOO PARK

**W**aterloo Park closed on November 1, 2011, and will remain closed until fall of 2015 while construction crews build the Waller Creek tunnel inlet. The inlet will be built adjacent to Waller Creek on the southern edge of the park.

The inlet project will include a new 20,000 sq. ft. maintenance and debris handling building, wet pond and creek channel improvements. The improved creek channel and new pond will capture and direct flood waters to the debris handling facility for trash screening and passage into the tunnel.

## WHAT'S IT LIKE TO WORK IN A TUNNEL?

**T**unneling work is dark, damp, and dusty. Like mining, it can also be dangerous. Several City and contractor employees are responsible for keeping workers as safe as possible. Throughout the operation, engineers will continually inspect the tunnel shaft to ensure the rock is intact and free of large cracks. If needed, Gunitite, a mixture of dry sand and cement, may be sprayed onto the rock walls to keep them intact.

To protect air quality, large blowers will circulate fresh

air into the shaft, and workers will wear air quality monitors at all times.

Protecting the health of Waller Creek is also a prime concern. Because digging takes place deep underground, the contractor must prevent groundwater from seeping into excavation areas. This can be accomplished by spraying Gunitite onto the tunnel walls or by injecting grout directly into leaks. Any water that does find its way into construction areas will be pumped to a series of water treatment controls before being discharged into the creek.



A tunnel Roadheader at work



# WALLER CREEK DESIGN COMPETITION

This fall, the Waller Creek Conservancy (WCC) launched a design competition inviting innovative landscape architects and architects from around the world to present ideas for revitalizing the Waller Creek District.

Conservancy members and supporters hope that the competition will generate specific solutions that reflect the environmental and cultural contexts of Austin, and new ways of thinking about landscape and urban design.

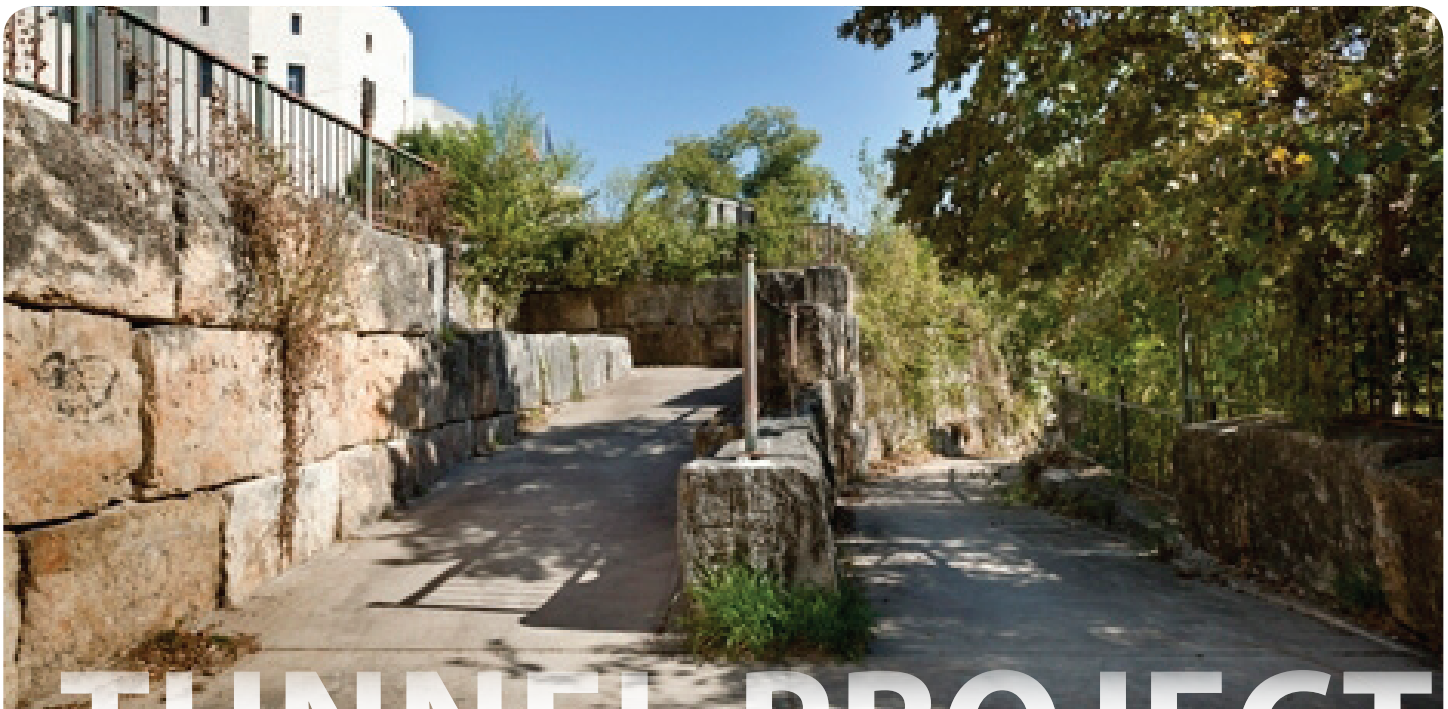


## THE COMPETITION IS A THREE-STAGE PROCESS

- 1 Portfolio evaluations to select eight to ten potential lead designer collaborations.
- 2 Team interviews to select up to four potential design teams.
- 3 A design competition to select a design with the most appropriate team to execute that design.

Once a winning design is selected, the WCC will work closely with the City to raise funds and enact policies that support implementation. For more information on the WCC or the design competition, visit <http://www.wallercreek.org/competition>.

**The competition winner will be announced in October, 2012.**




# TUNNEL PROJECT



City of Austin  
Public Works Department  
Waller Creek Tunnel Project  
505 Barton Springs Road, Suite 900  
Austin, Texas 78704

PRSRT STD  
US POSTAGE  
PAID  
AUSTIN, TEXAS  
PERMIT NO. 02537



**City of  
Austin**

**WATERSHED  
PROTECTION**

FOR MORE  
INFORMATION,  
PLEASE CONTACT  
Carolyn Perez, 512-974-7139  
or email  
[Carolyn.Perez@ci.austin.tx.us](mailto:Carolyn.Perez@ci.austin.tx.us).  
The project web site is  
[http://www.ci.austin.tx.us/  
wallercreek/](http://www.ci.austin.tx.us/wallercreek/)