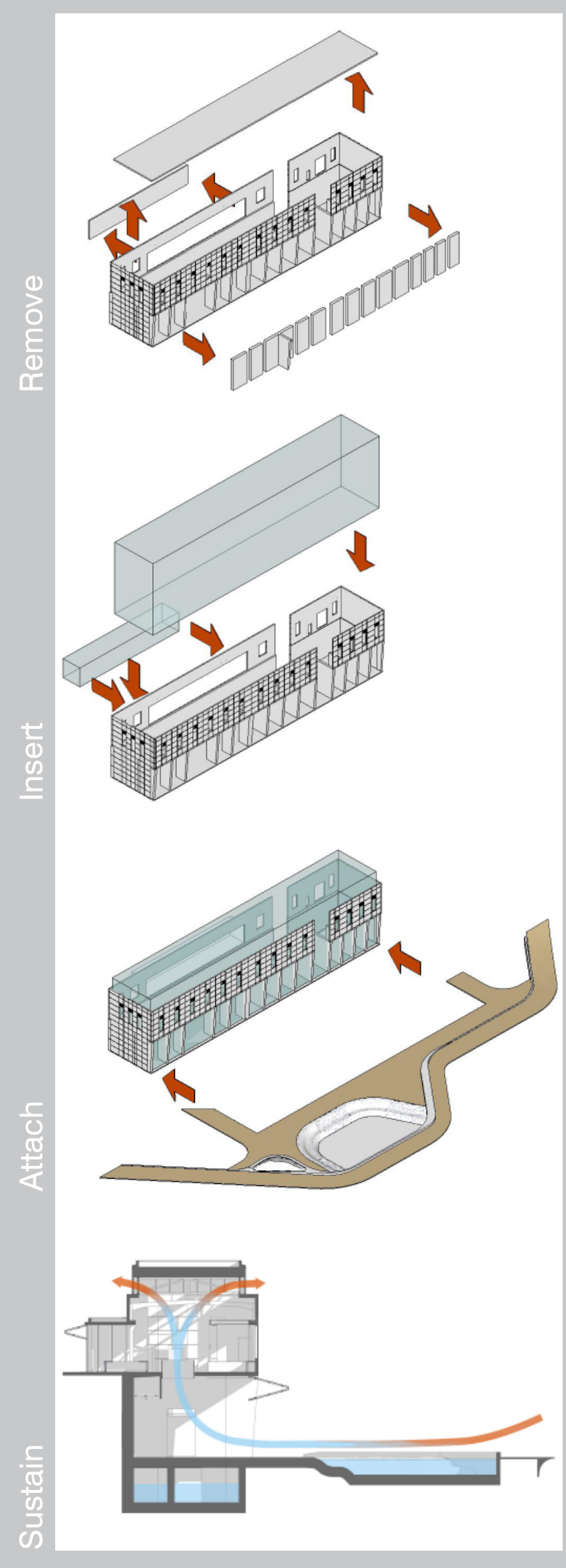


INTAKE



Aerial View



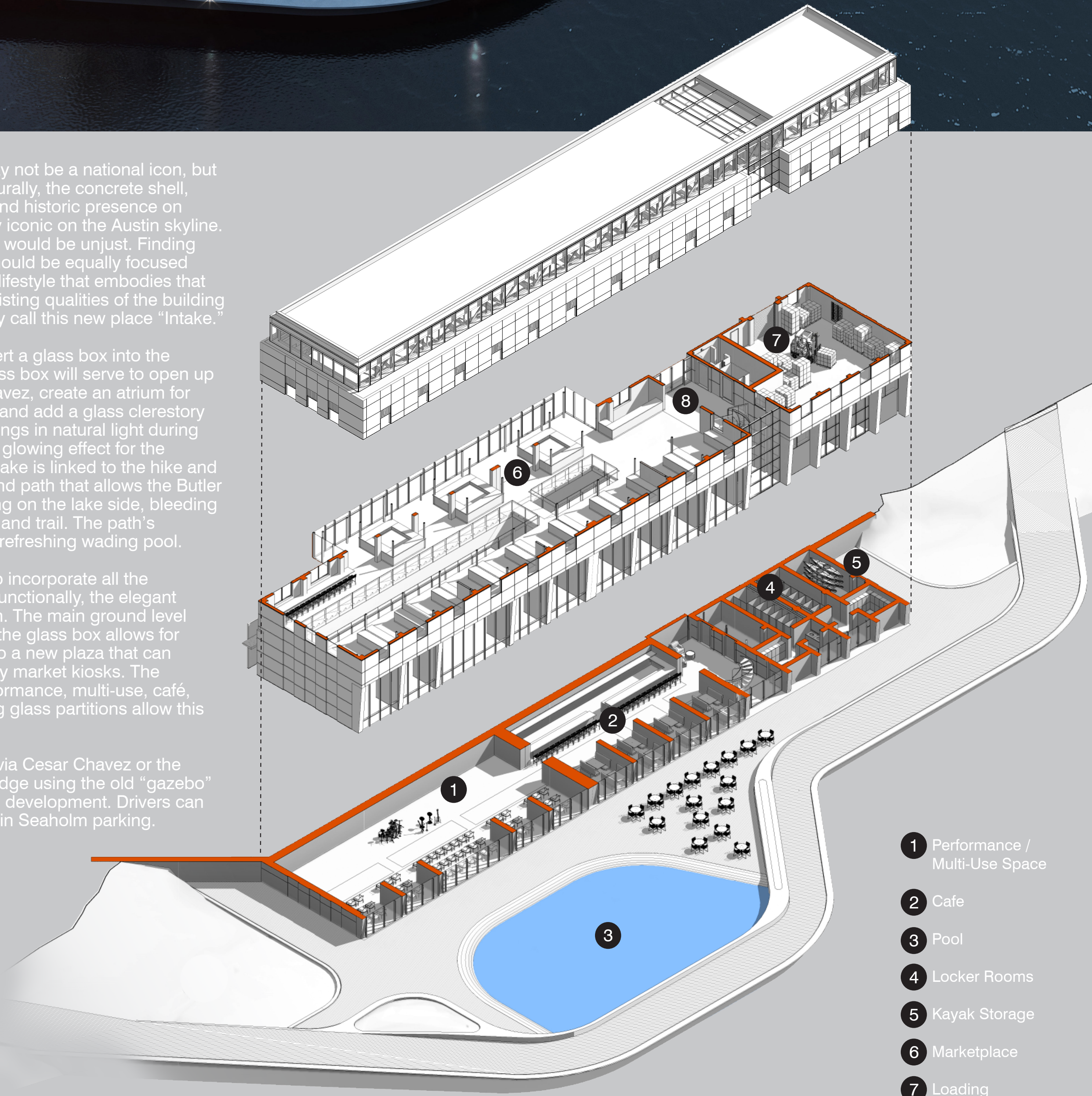
The Seaholm Intake Building may not be a national icon, but to Austin, it's a classic. Architecturally, the concrete shell, solid proportions, tapered fins, and historic presence on Lady Bird Lake render it instantly iconic on the Austin skyline. To demolish or overly renovate it would be unjust. Finding a new use for Seaholm Intake should be equally focused on the experience of Austin, the lifestyle that embodies that experience, and elevating the existing qualities of the building that we already adore. We simply call this new place "Intake."

Conceptually we propose to insert a glass box into the concrete shell of Intake. This glass box will serve to open up Intake to the river and Cesar Chavez, create an atrium for circulating through the building, and add a glass clerestory "pop-up" at the roof level that brings in natural light during the day and creates a signature, glowing effect for the building at night. Additionally, Intake is linked to the hike and bike trail via a new wood deck and path that allows the Butler trail to wrap in front of the building on the lake side, bleeding the edge between outdoor deck and trail. The path's connection to Intake encloses a refreshing wading pool.

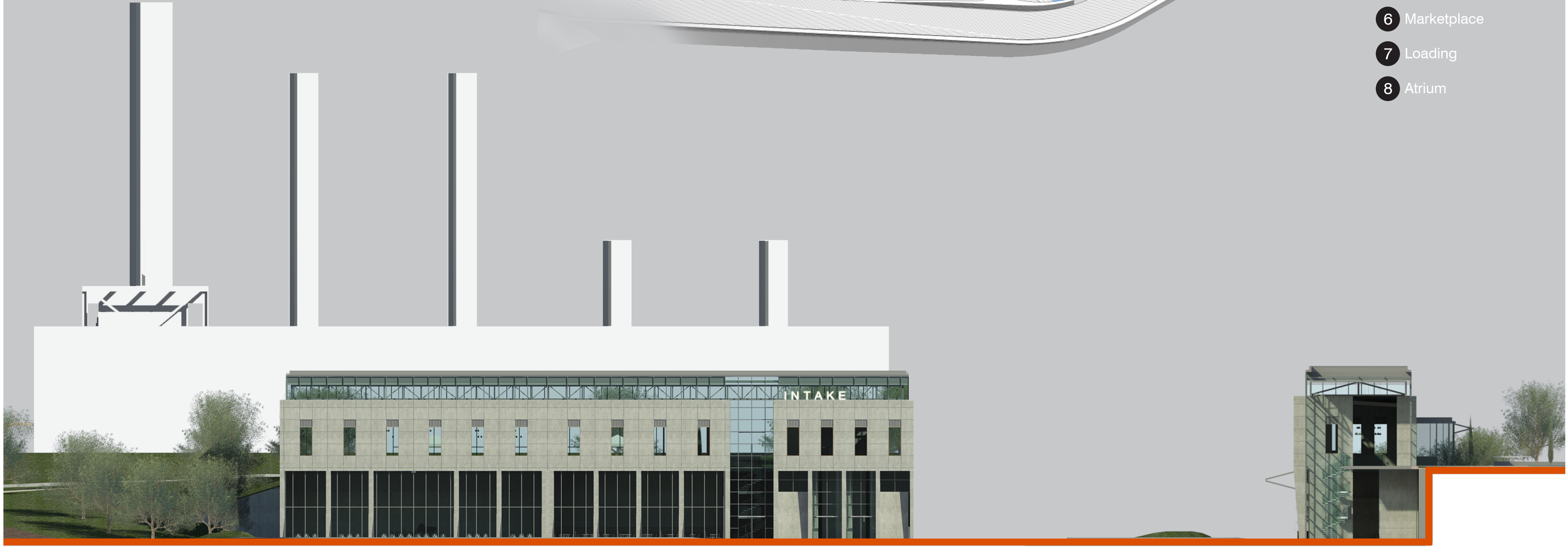
Programmatically, we propose to incorporate all the major Austin lifestyle activities. Functionally, the elegant glass box will serve to unify them. The main ground level houses a farmers' marketplace; the glass box allows for the marketplace to open out onto a new plaza that can incorporate even more temporary market kiosks. The naturally lit spaces will host performance, multi-use, café, and bar spaces. Vertically-folding glass partitions allow this openness to be realized.

Intake can be accessed on foot via Cesar Chavez or the Butler trail on the lake side. A bridge using the old "gazebo" links Intake to the main Seaholm development. Drivers can access Intake by utilizing the main Seaholm parking.

Sustainable features include: daylighting, evaporative cooling, canopies, rainwater collection, reduced impervious cover

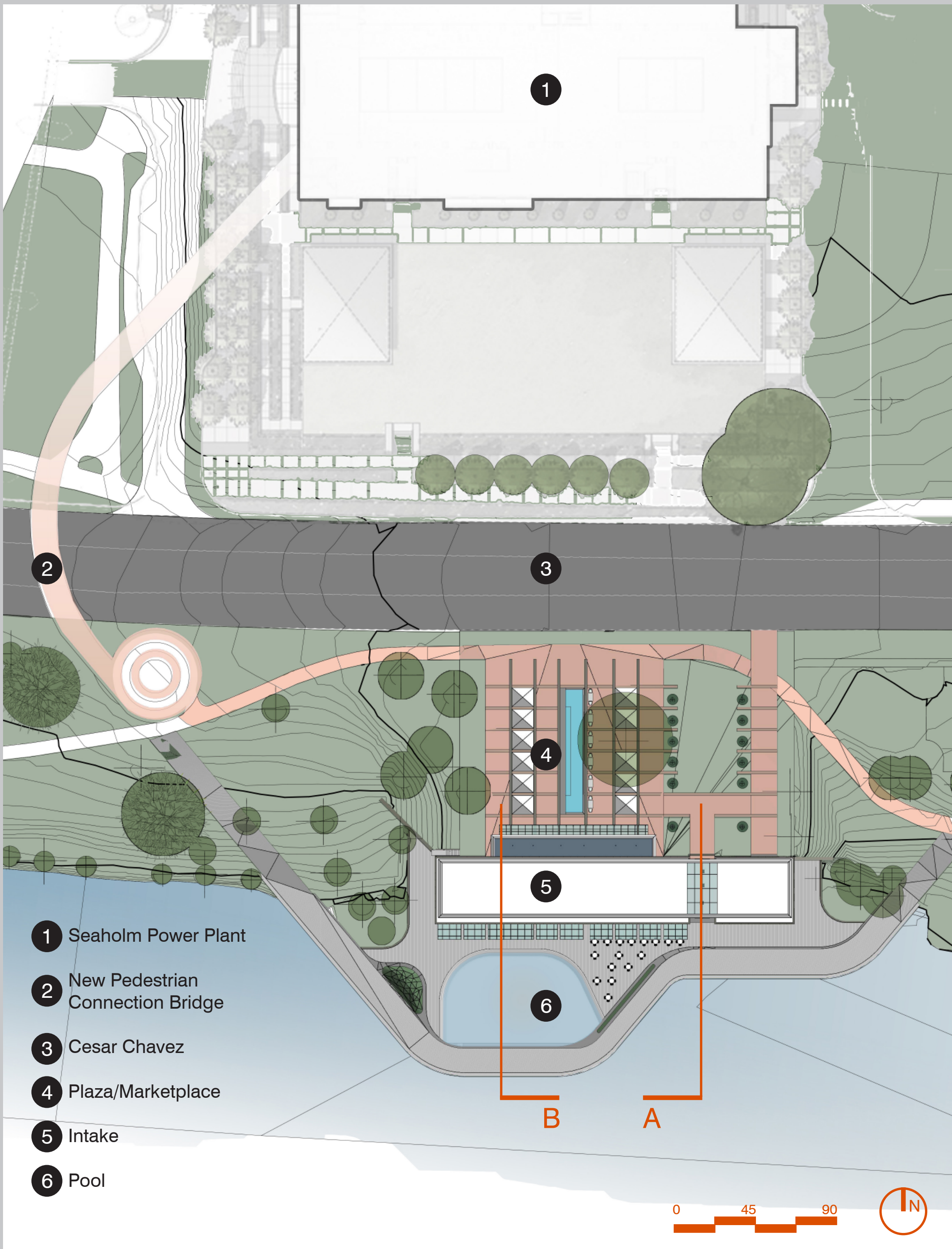


- 1 Performance / Multi-Use Space
- 2 Cafe
- 3 Pool
- 4 Locker Rooms
- 5 Kayak Storage
- 6 Marketplace
- 7 Loading
- 8 Atrium



South Elevation

Section A



Site Plan



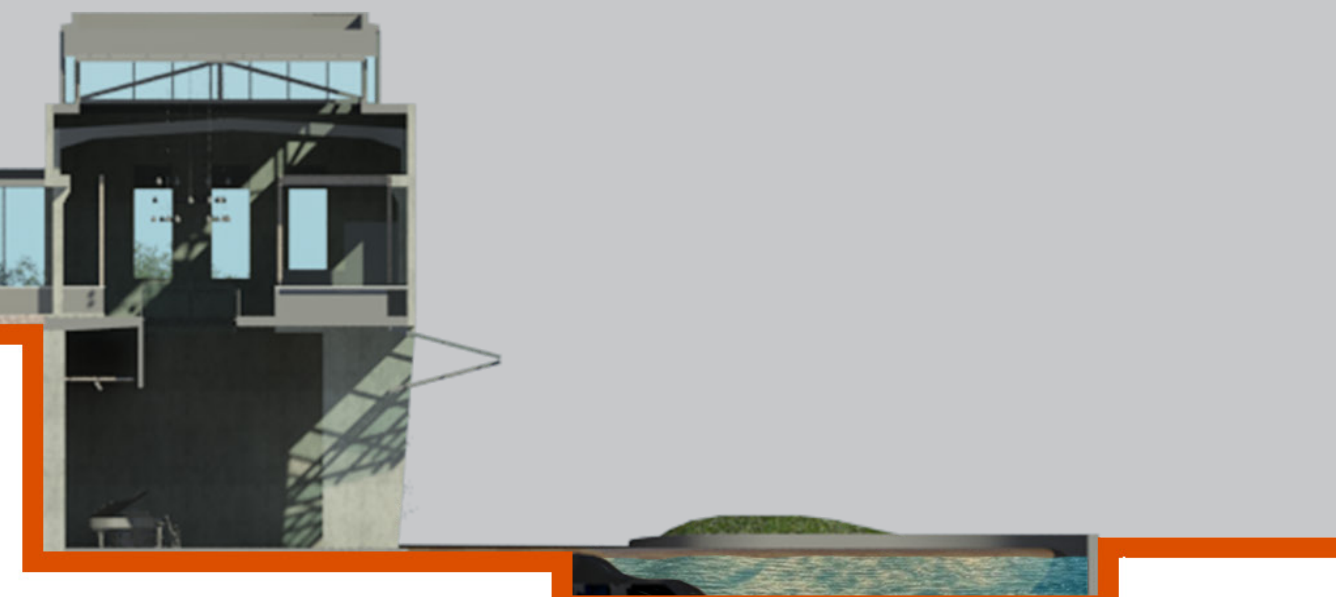
Entry Plaza View



Deck View



North Elevation



Section B